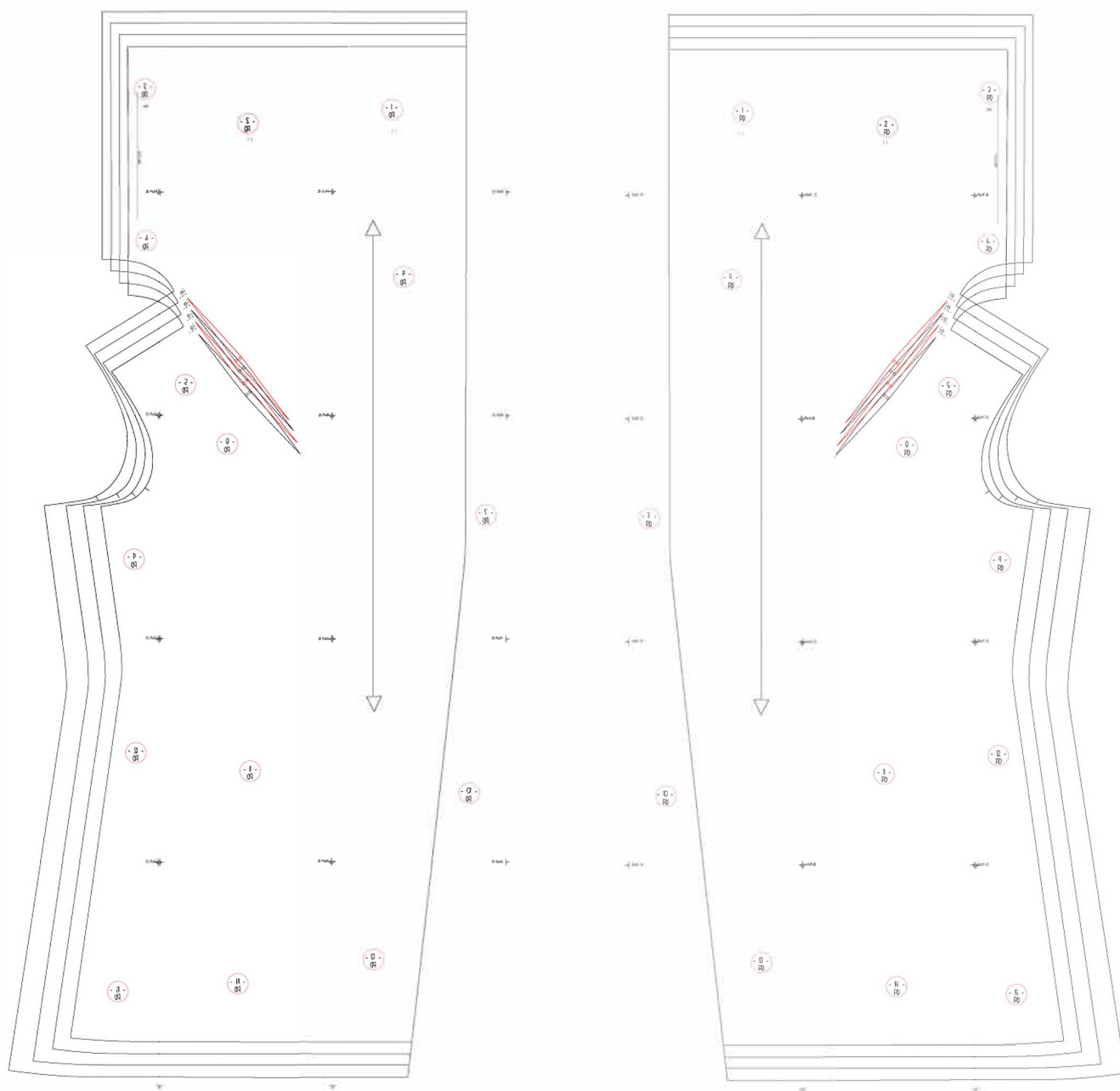


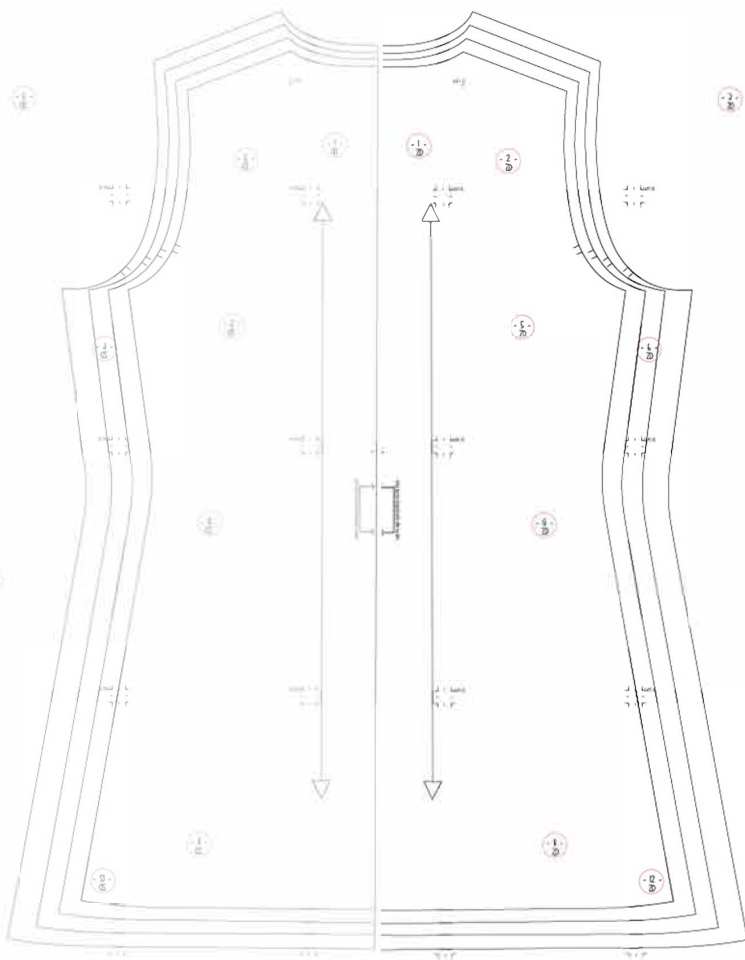
PŘEDNÍ DÍL

OBKRESLÍME 2X NA LÁTKU
(ZRCADLOVĚ OTOČENÝ. KAŽDÝ DÍL ZVLÁŠTĚ)

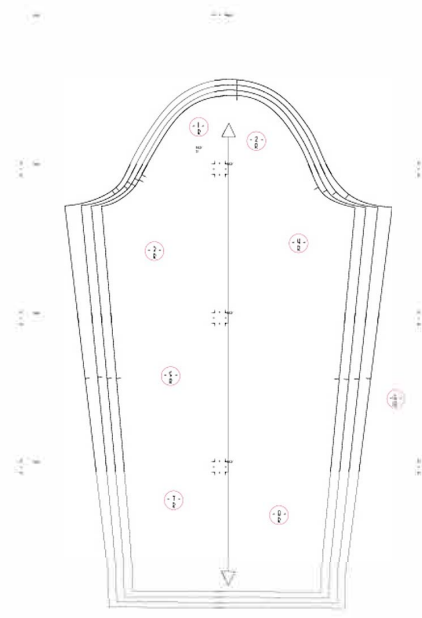


POSTUP S FOTOŇÁVODEM NAJDETE NA STRÁNKÁCH: WWW.UNUODESIGN.CZ/BLOG-O-SIT/
ILUSTRATIVNÍ NÁHLED JEDNOTLIVÝCH DÍLŮ BEZ MĚŘÍTKA

ZADNÍ DÍL
OBKRESLIT NA LÁTKU 1x
a 1x ZRCADLOVĚ OTOČENÝ

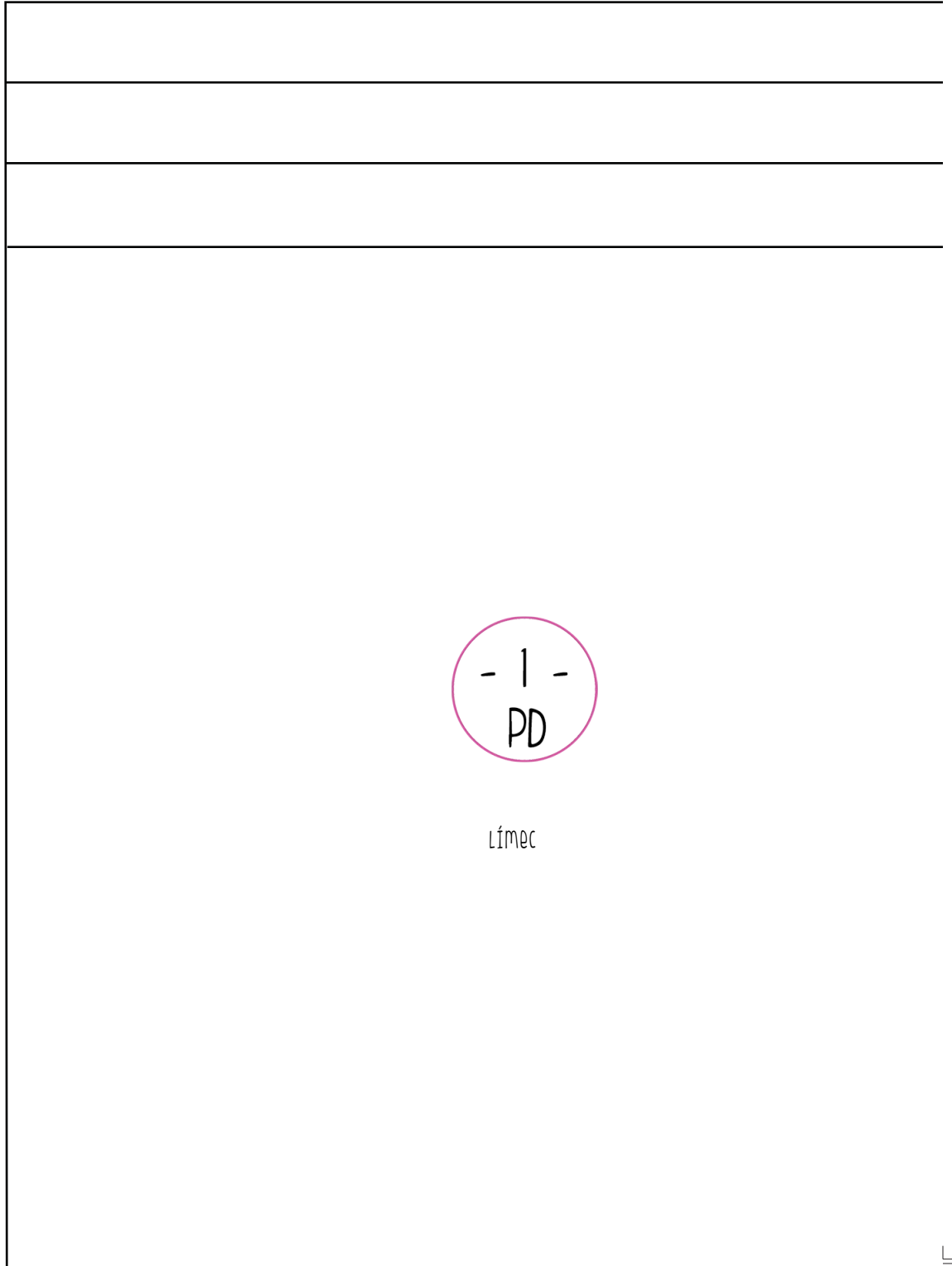


RUKÁV 2X





Postup s fotonávodem najdete na stránkách www.unuodesign.cz/blog-0-s4/
střih vyřkněte v měřítku 1:1

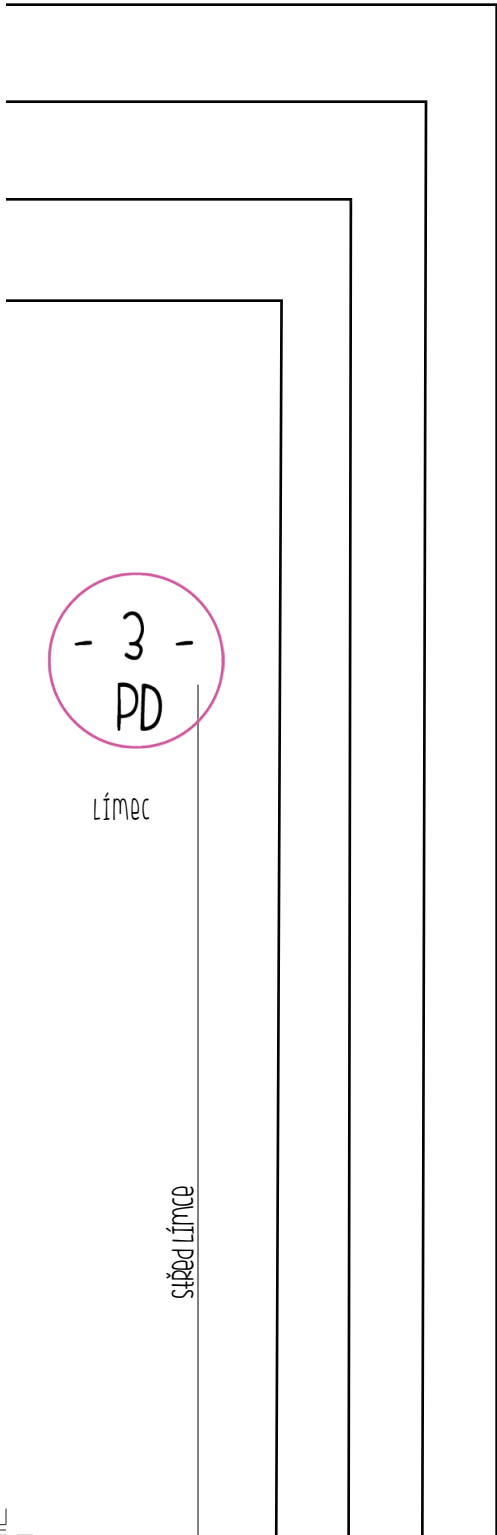


Límeč



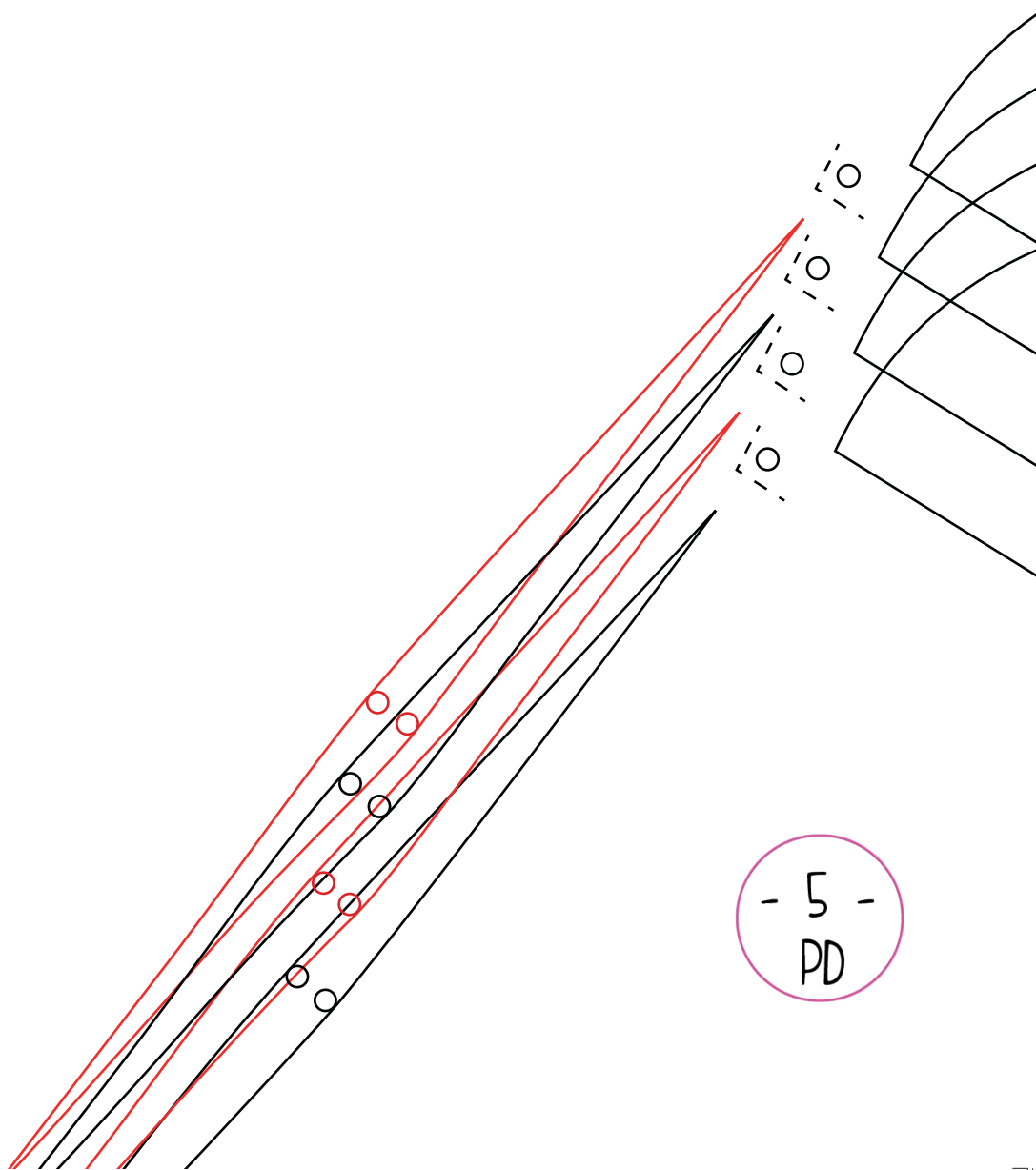
- 2 -
PD

límeč

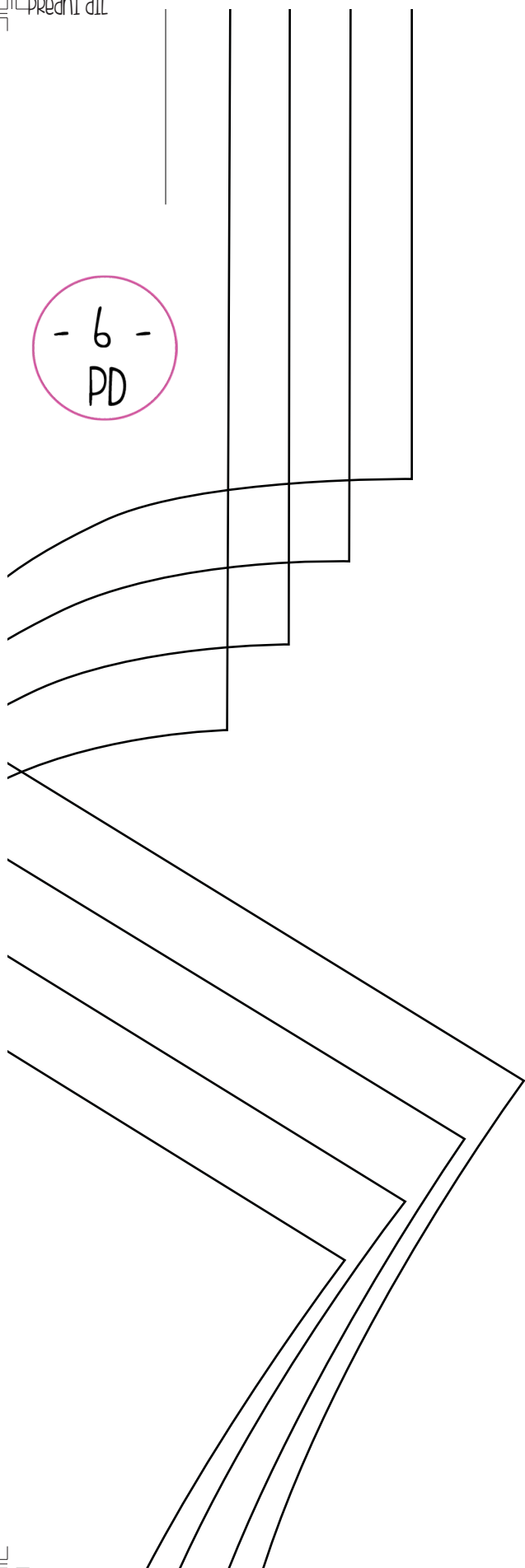




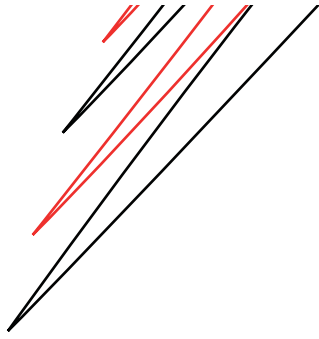
- 4 -
PD

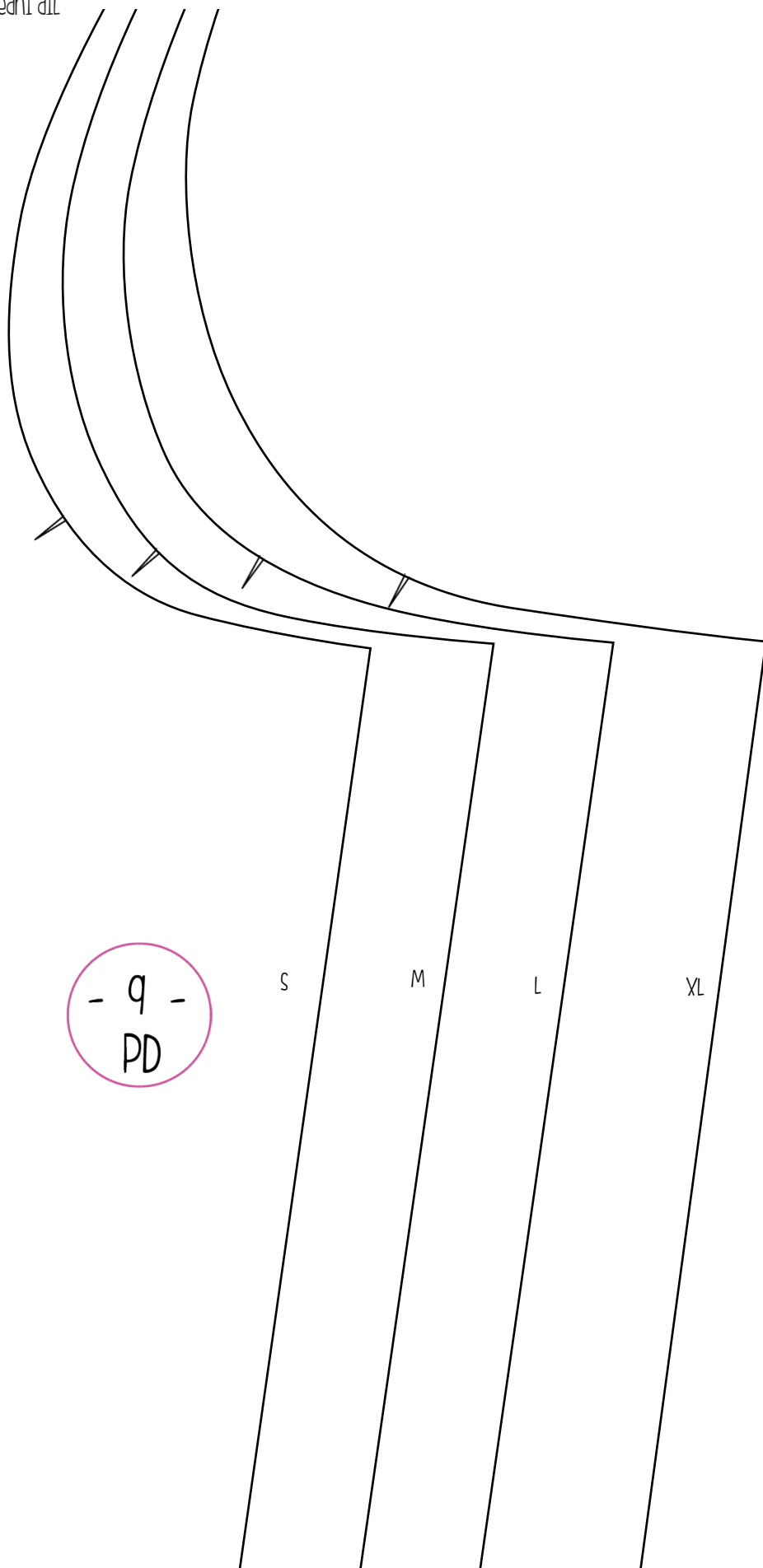


- 6 -
PD



- 7 -
PD





- q -
PD

S

M

L

XL

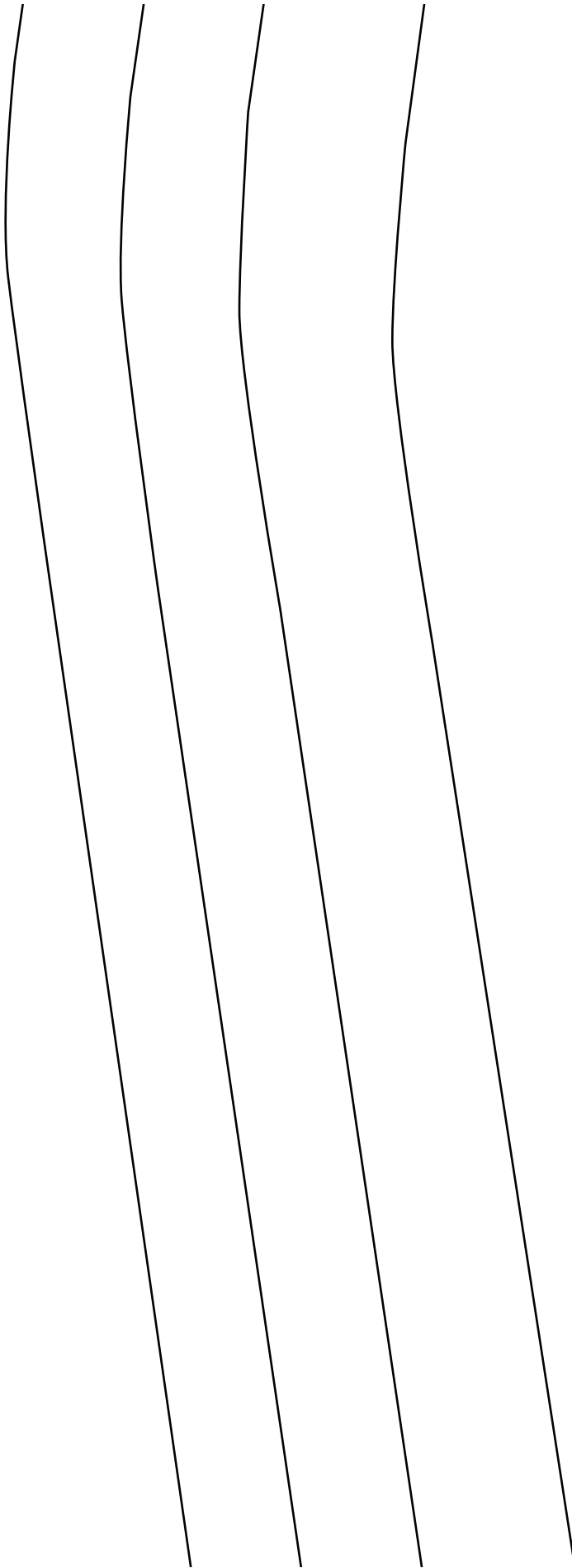


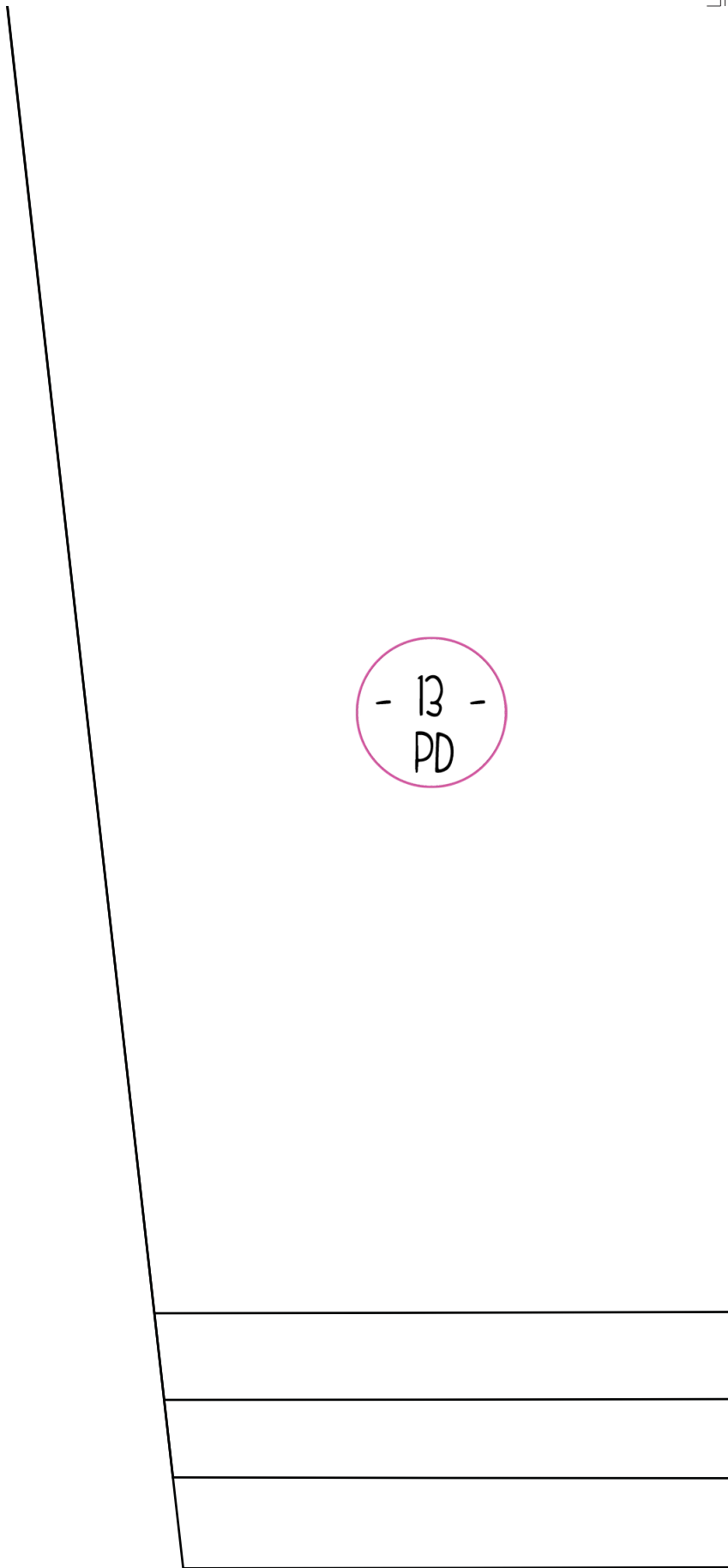
- || -
PD





- 12 -
PD

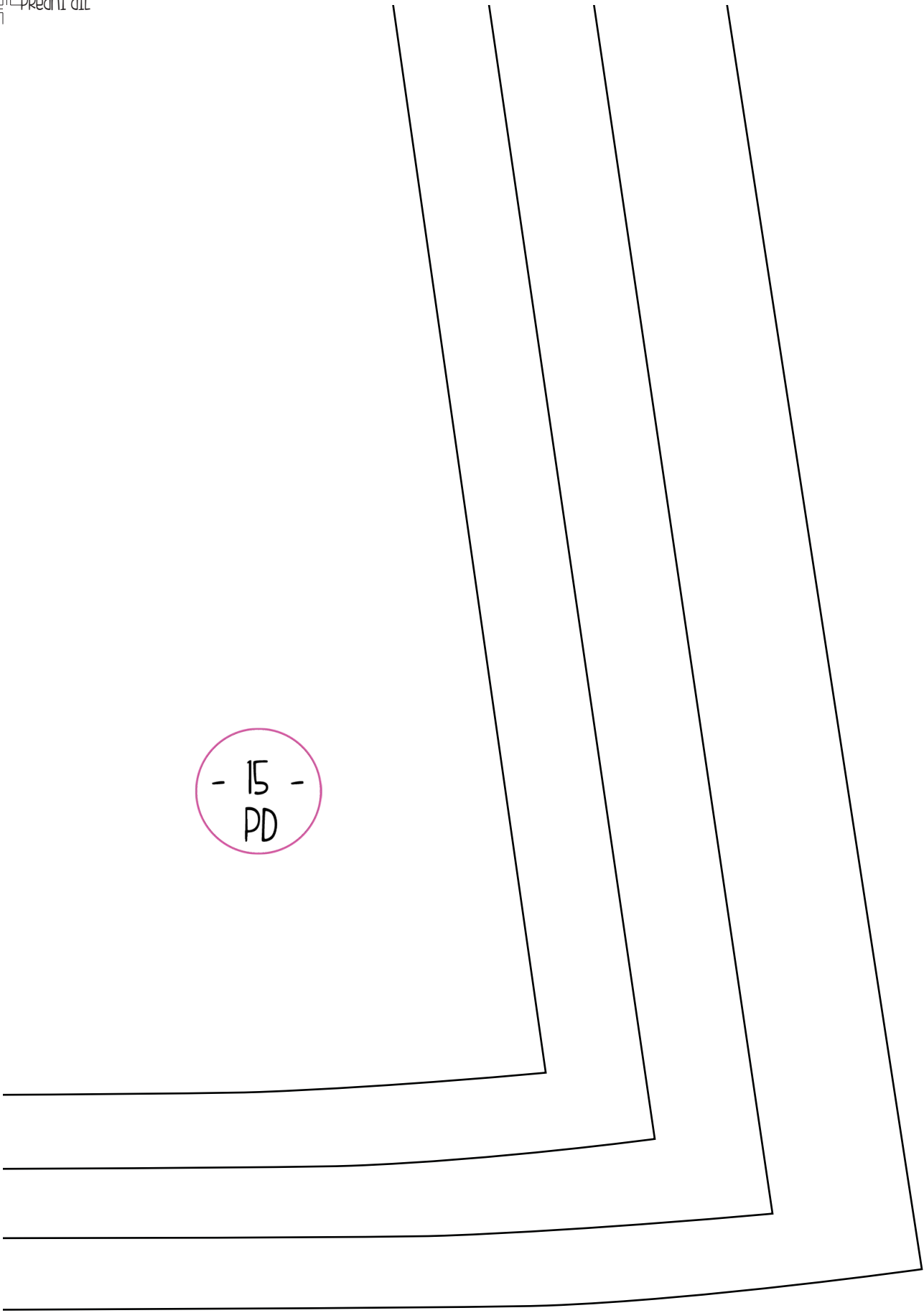


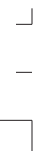
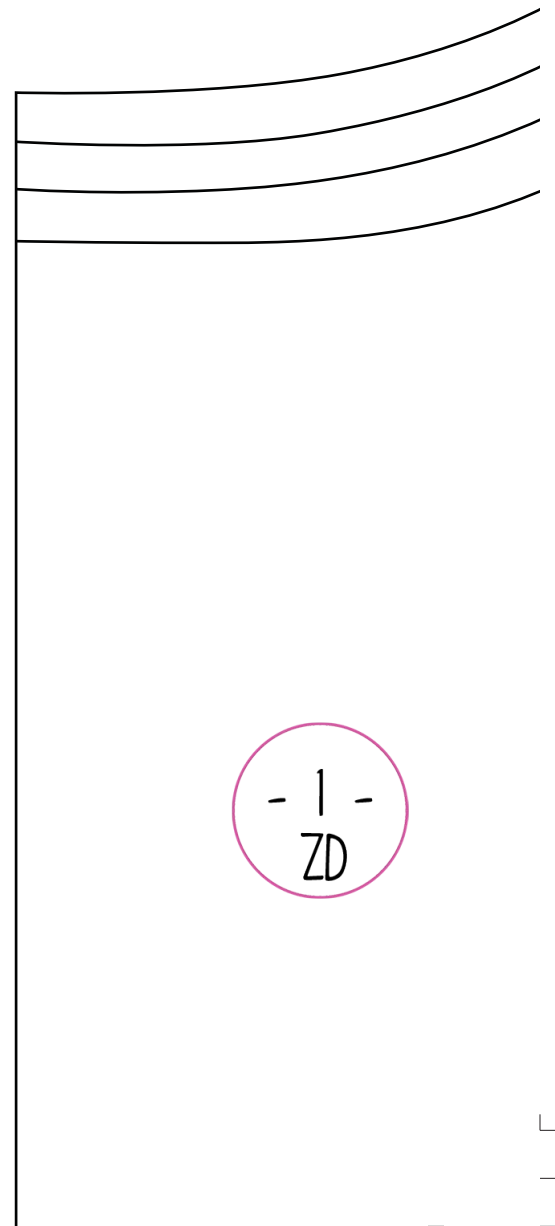


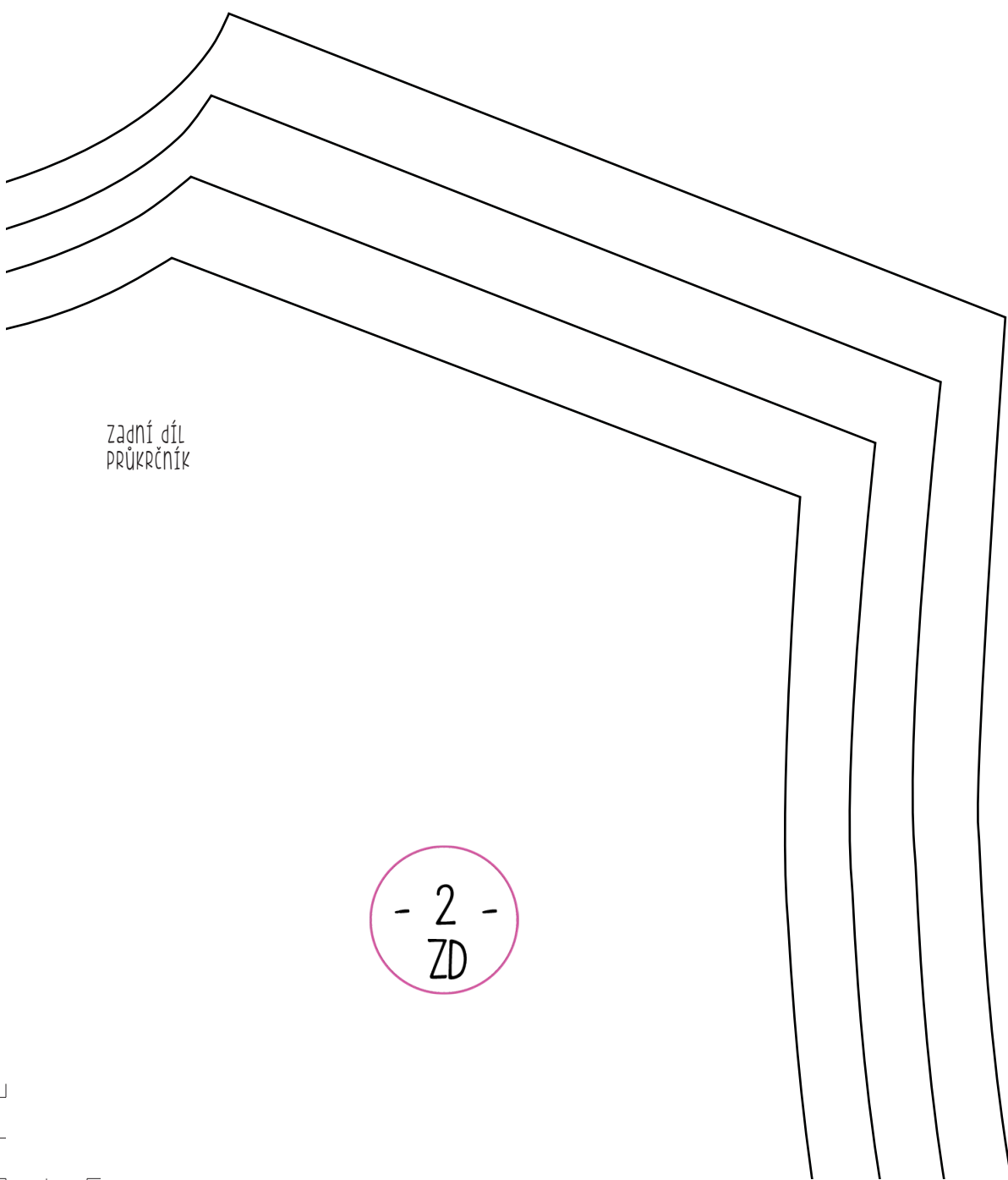
- 13 -
PD

- 14 -
PD

- 15 -
PD







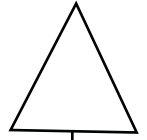
Zadní díl
PRŮKRČNÍK

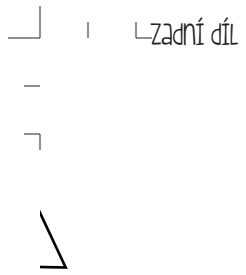
- 2 -
ZD

- 3 -
ZD

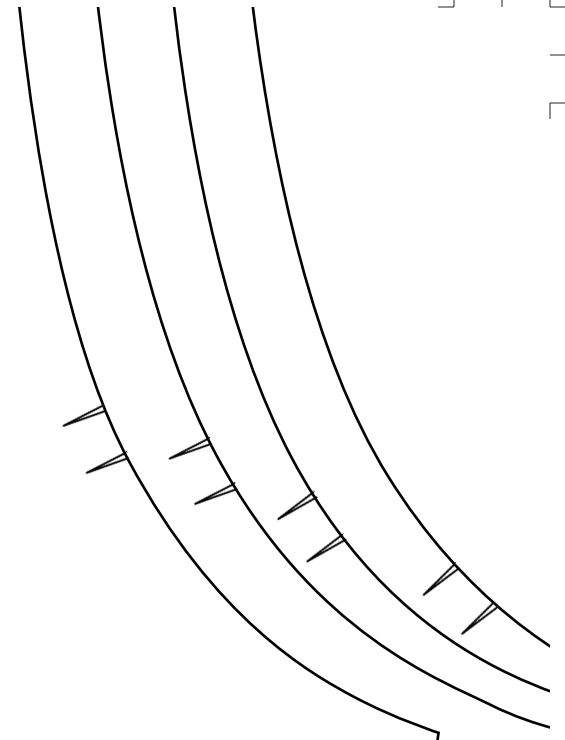
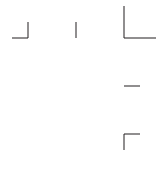
zadní díl

- 4 -
ZD





zadní díl

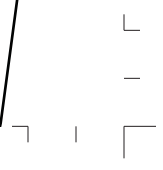
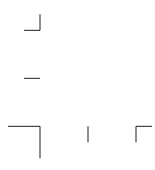


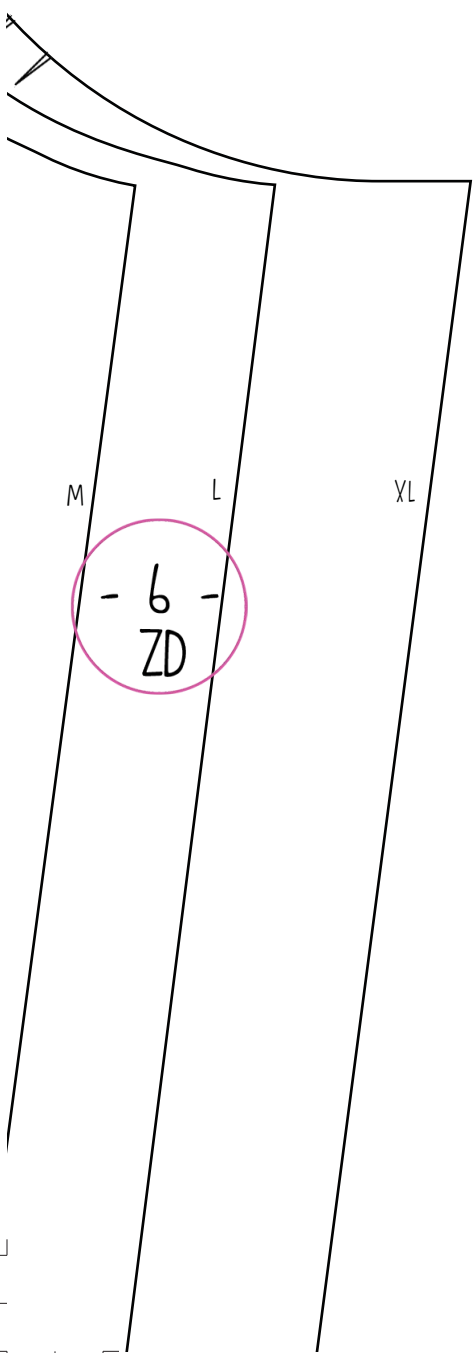
- 5 -
ZD

S

M

postup s fotohávodem najdete na stránkách www.unuodesign.cz/blog-0-sih/

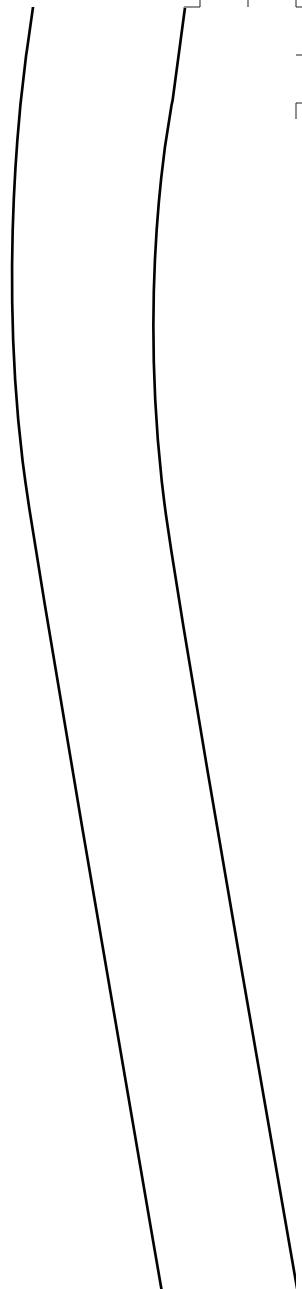




- 7 -
ZD

podle této osy zpravidla ovládají sílu na látku
nikdy se nepoužívá jako osu

- 8 -
ZD

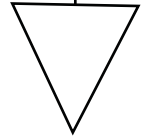


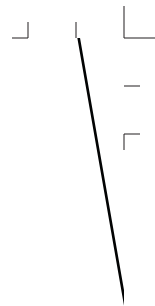
1 | Zadní díl

- 9 -
ZD

zadní díl

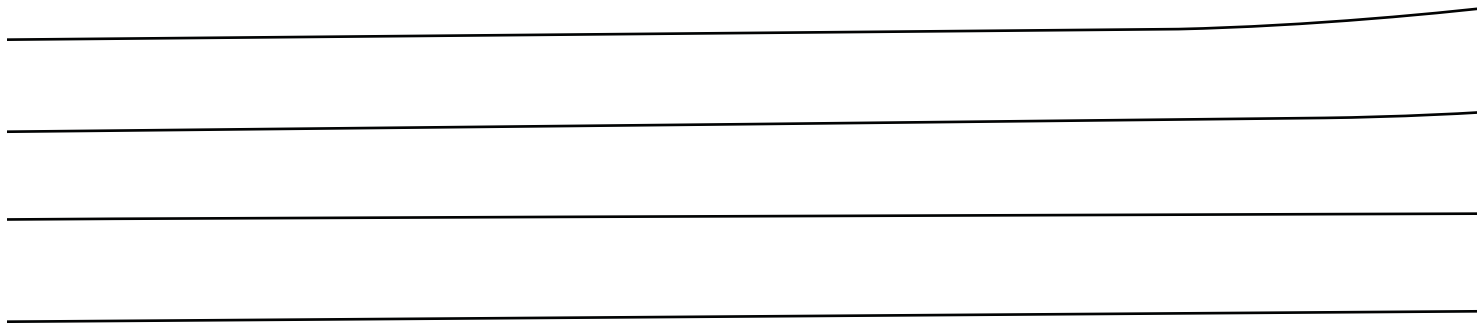
- 10 -
ZD





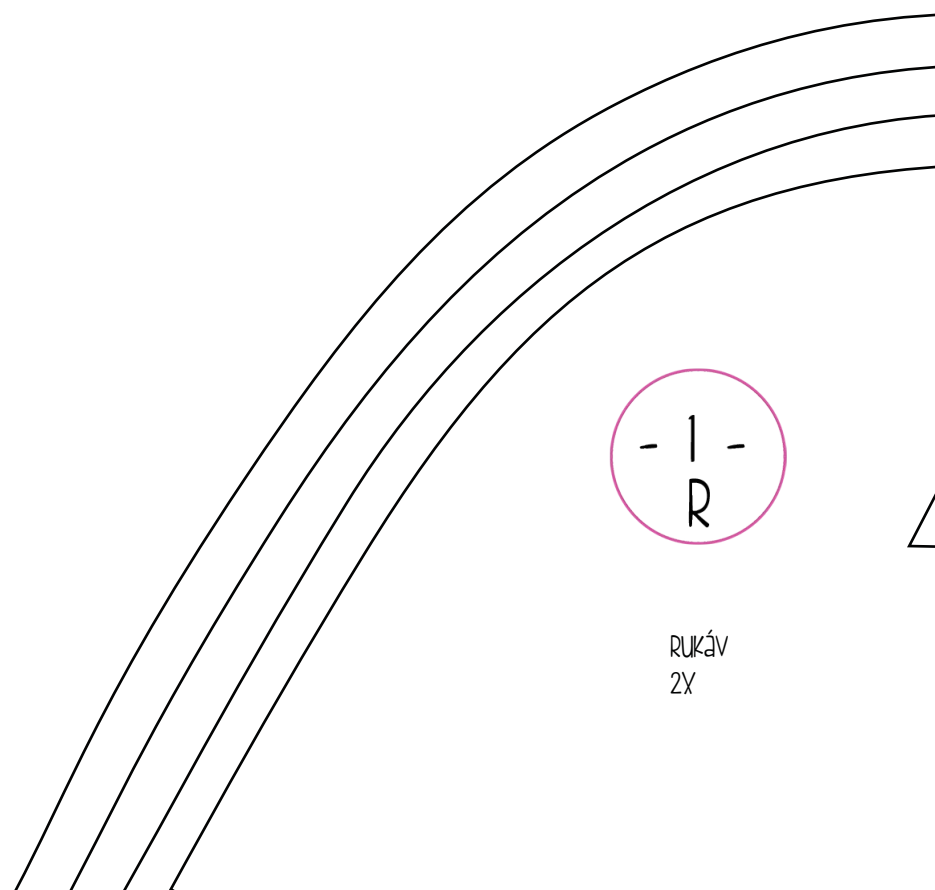
7

- || -
ZD



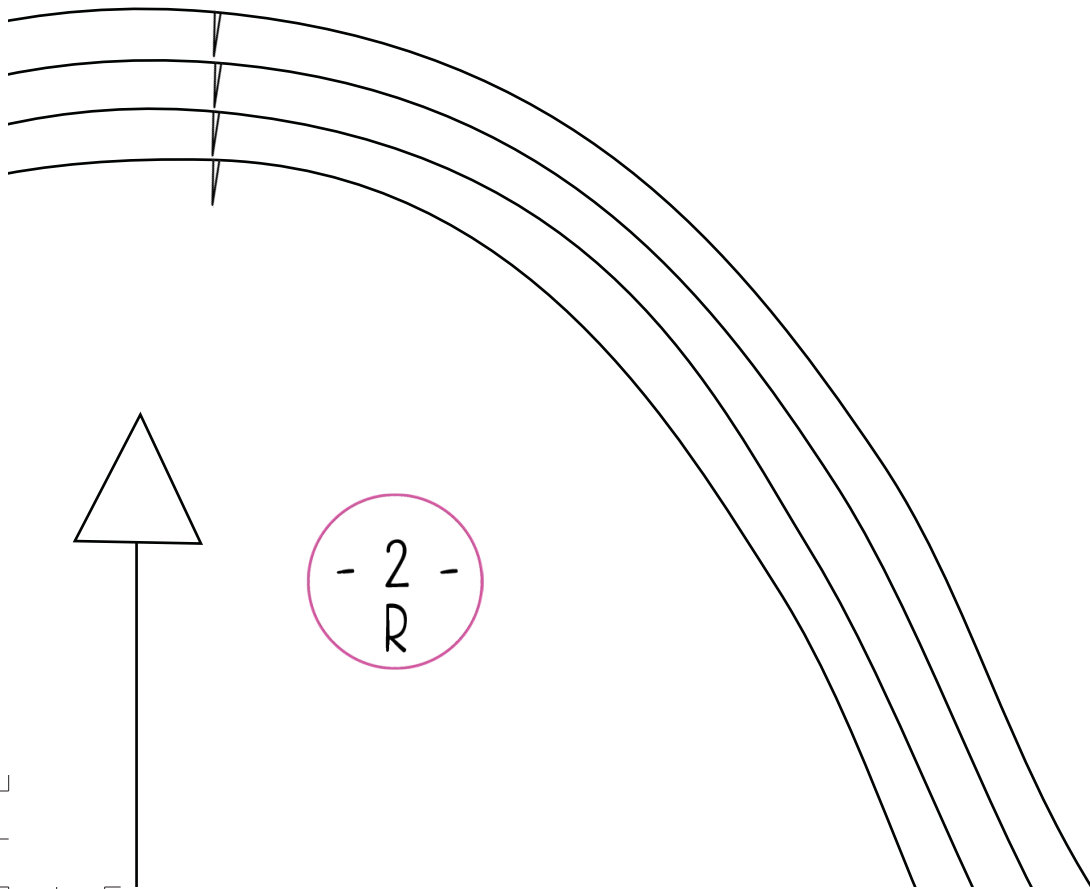
zadní díl

- 12 -
ZD

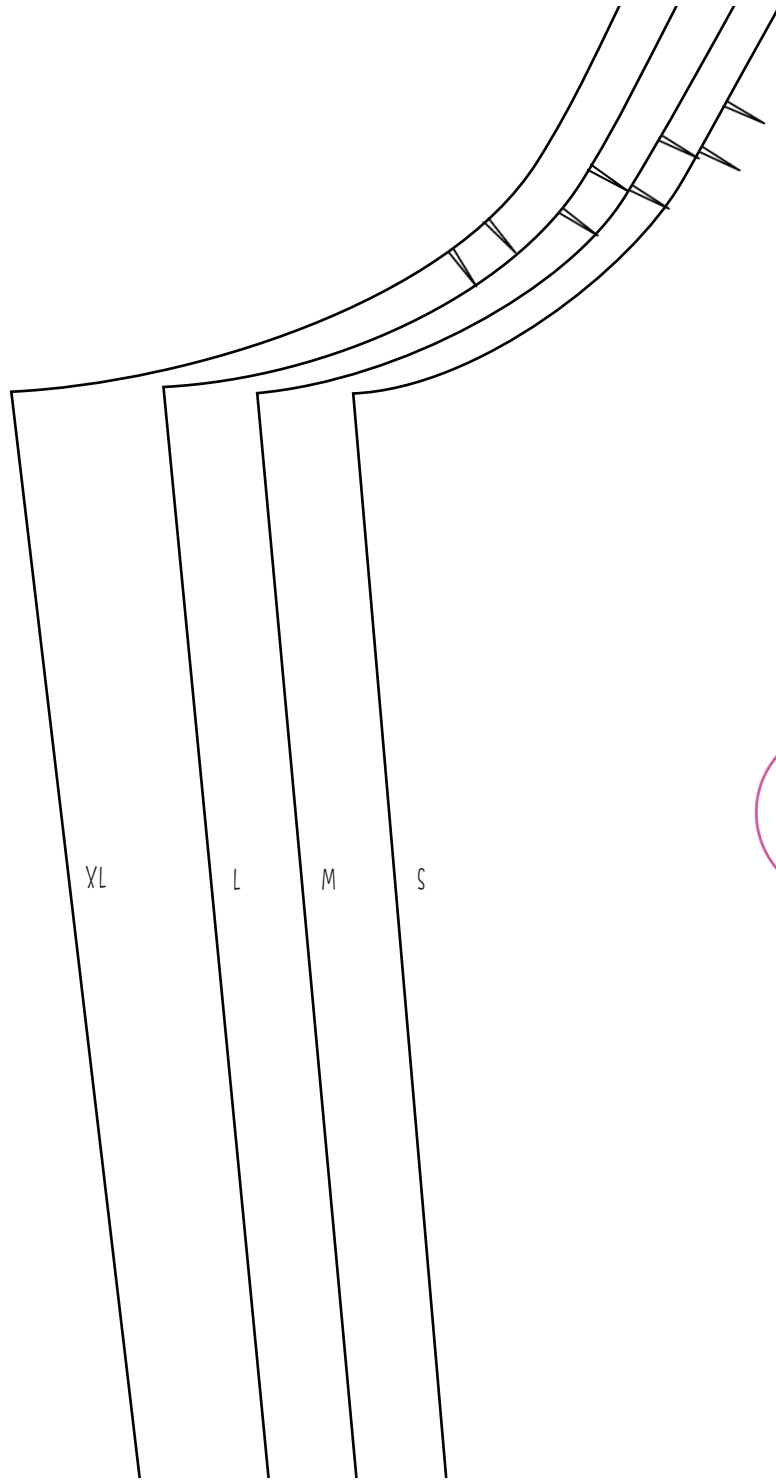


rukáv
2x





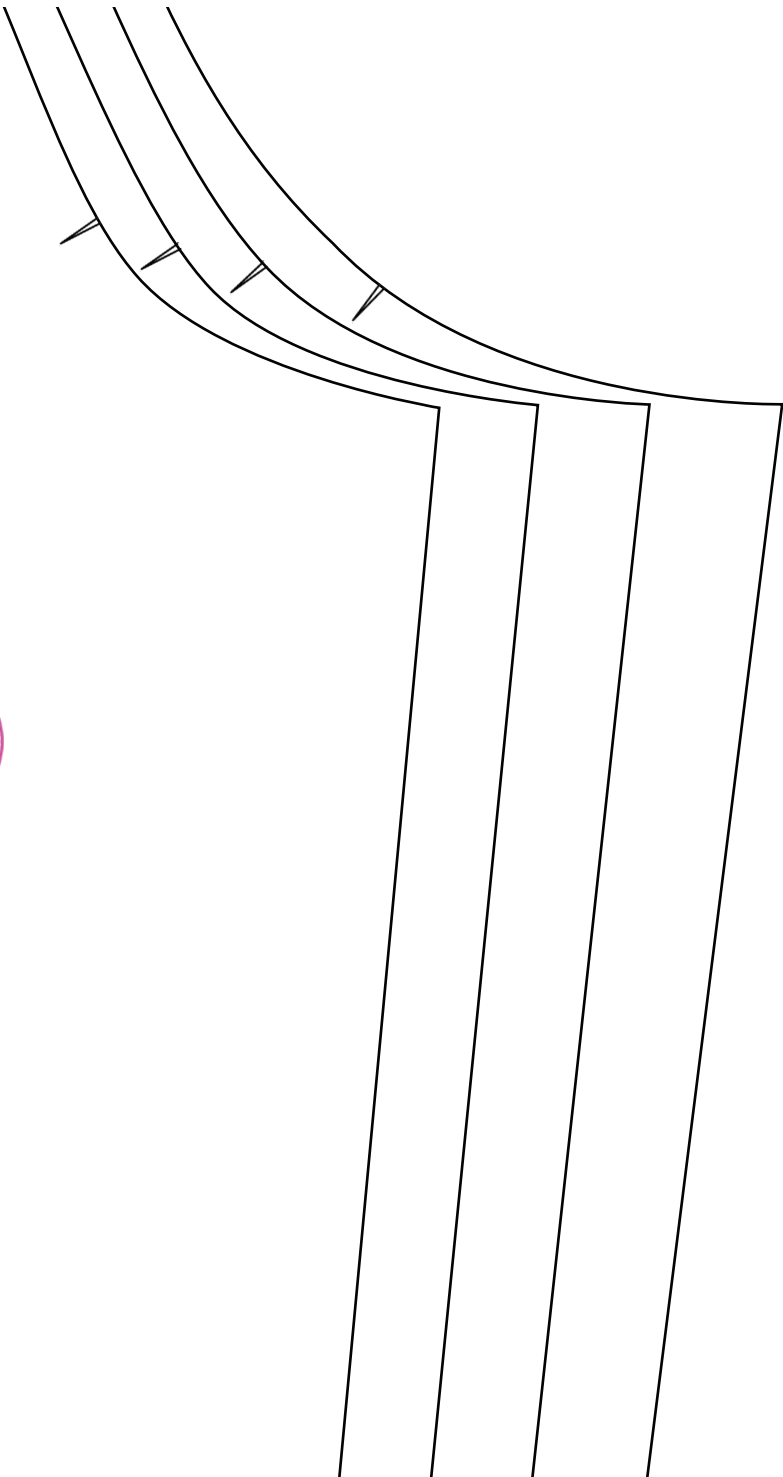
rukáv



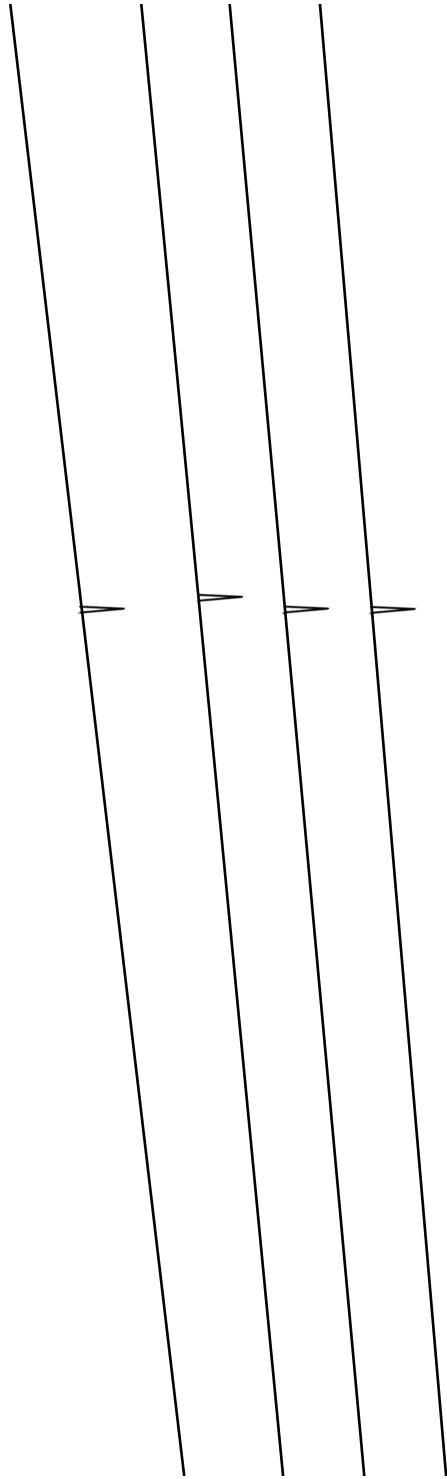
- 3 -
R

rukáv

- 4 -
R

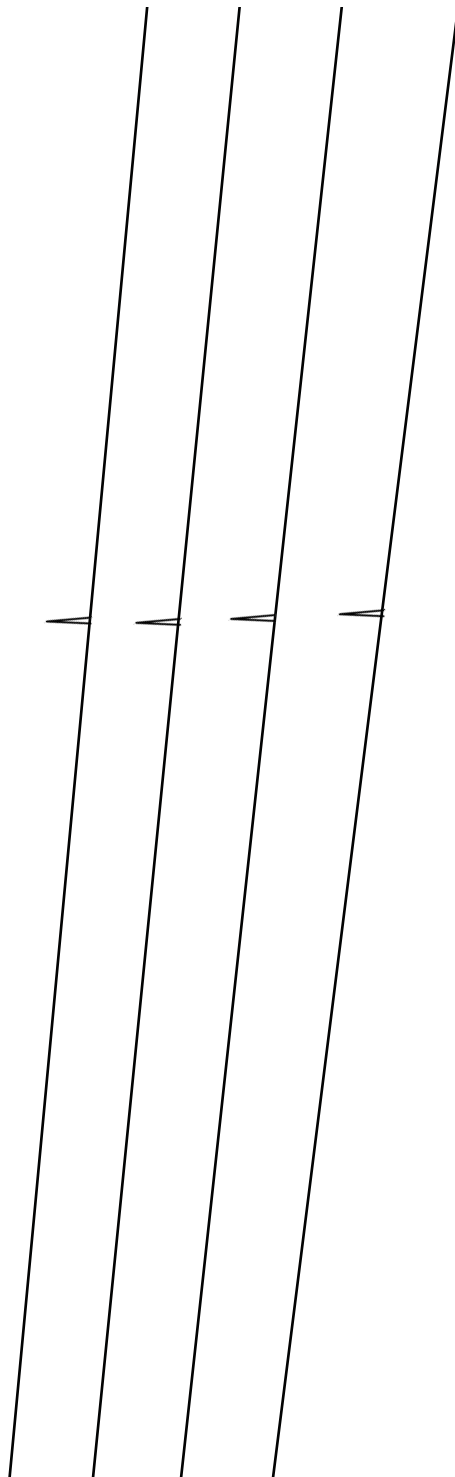


rukáv



5
R

rukáv



- 6 -
R

rukáv

XL L M S

- 7 -
R

7

rukáv

